

**A-MECH
B-MECH
PROBLEM**

NOTE: ALL DIMENSIONS ARE TO BE DECIMAL INCHES AND TO PLACES AS NOTED ON PROBLEM & TITLE BLOCK
EX:
 NO DECIMAL= +/- .094
 .X= +/- .062
 .XX= +/- .031
 .XXX= +/- .015
 ANGLES= +/- .5 DEG

NOTE: THREADS 1" AND SMALLER SHALL BE SHOWN USING 'SIMPLIFIED' DRAFTING METHOD

MEDIUM KNURL

**A-MECH ONLY:
GD&T SHOULD BE APPLIED TO ITEMS 1 AND 2 ONLY**

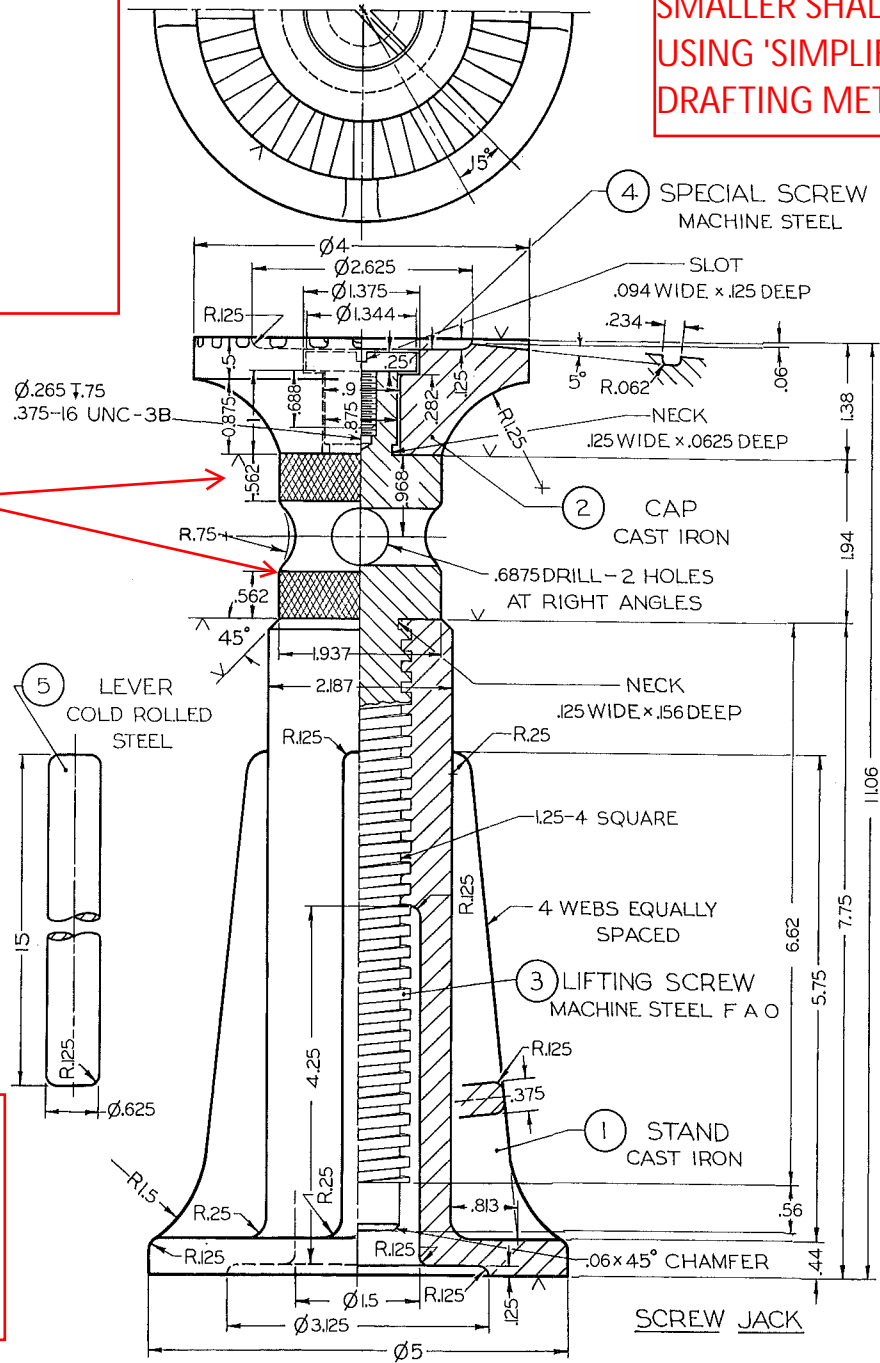


FIGURE 14.77 Screw Jack.
~~Prob. 14.40: (1) Draw details. See Fig. 14.21, showing "boxed in" views on sheet layout 0 or A2 (see inside front cover). (2) Draw assembly. If assigned, convert dimensions to decimal inches or redesign for metric dimensions.~~

MATERIALS FOR ITEMS DEPICTED:
 ITEM 1: CAST IRON ASTM A47-77 NO. 35018
 ITEM 2: CAST IRON ASTM A47-77 NO. 35018
 ITEM 3: AISI/SAE 1112 CRS
 ITEM 4: AISI/SAE 1112 CRS
 ITEM 5: ASTM C1018 CRS

CONSIDER MACHINED FINISH SURFACES FOR ITEM 1 AND 2 AS NOTED. ALL OTHER SURFACES FOR THESE 2 ITEMS ARE TO BE 'AS CAST'